

VGA Infrared Compact Camera Core

ERNEST 6



Ultra Compact ●

Low Noise ●

Versatile ●

Low Power ●



SENS
SIGHT

ERNEST 6



Goggles



Drone



TWS

ERNEST 6

ERNEST 6 is the versatile Compact Camera Core from Senssight, the technology expert for thermal vision systems. Based on the SeeCube family, the proven hardware electronics of FullScale, it achieves market-leading performance in term of size, power and image quality.

ERNEST 6 streamlines the integration of a cost-effective camera core into various thermal imaging solutions and allow our customers to focus on value-added integration.

- Resolution : VGA 640 x 480 pixels

- Frame rate : 60 FPS

- Dimension : 21 x 21 mm

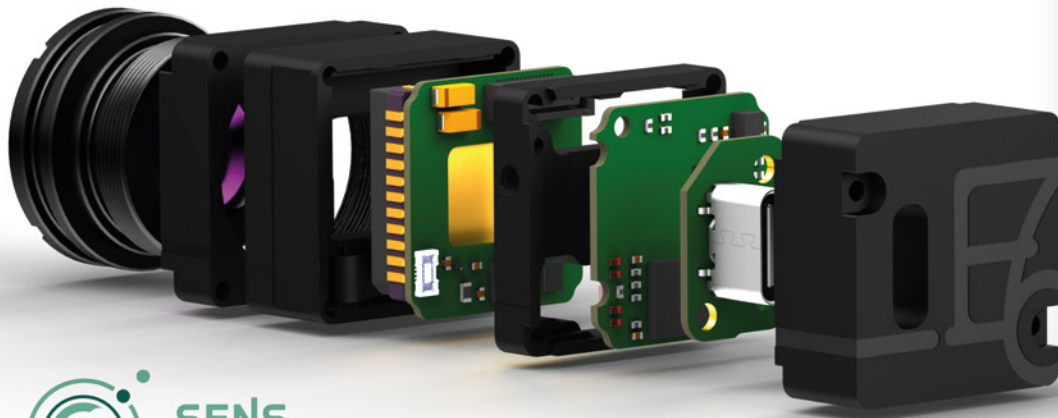
- HFoV : 90°, 50°, 30° or 15°

- NETD : < 50 mK standard

- Shutter : Built-in

- Interfaces : USB or Flex

- Sensor : LYNRED ATTO640



Calibrated Core provided with SDK supporting Thermography



- +/- 2°C precision
- Down to 20 mK NETD with processing
- Running on PC, Jetson, Raspberry Pi...
- Advanced image enhancement

