

QVGA Infrared Compact Camera Core

EILEEN 3



Native ShutterLess

Cost-Effective

Ultra Small

Versatile



SENS
SIGHT



Drone



Handheld



Stealth

EILEEN 3

EILEEN 3

EILEEN 3 is the versatile Compact Camera Core from *Senssight*, the technology expert for thermal vision systems. Based on the *SeeCube* family, the proven hardware electronics of *FullScale*, it achieves **market-leading performance** in term of size, power and image quality.

EILEEN 3 streamlines the integration of a cost-effective camera core into various thermal imaging solutions and **allow our customers to focus on value-added integration.**

- **Resolution** : QVGA 320 x 240 pixels

- **Frame rate** : 60 FPS

- **Dimension** : 18 x 17 mm

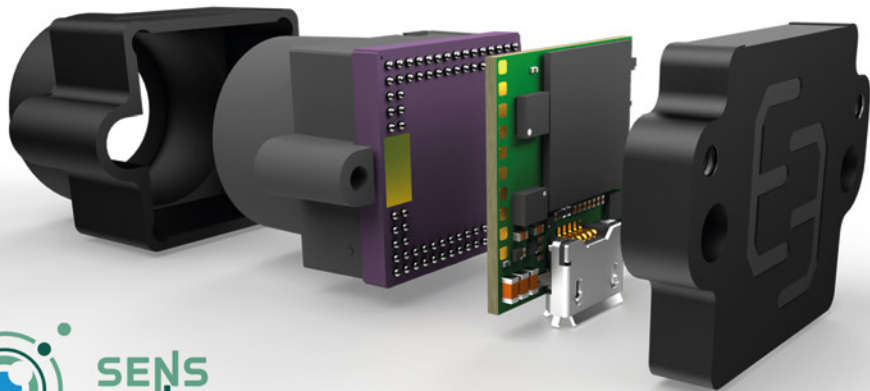
- **HFoV** : 70°, 42° or 28°

- **NETD** : < 50 mK standard

- **Shutter** : Native ShutterLess

- **Interfaces** : USB

- **Sensor** : LYNRED ATI320



Calibrated Core provided with SDK supporting Thermography



- +/- 2°C precision
- Down to 20 mK NETD with processing
- Running on PC, Jetson, Raspberry Pi...
- Advanced image enhancement

